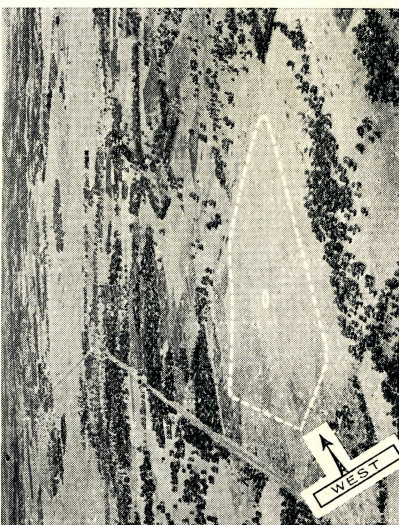
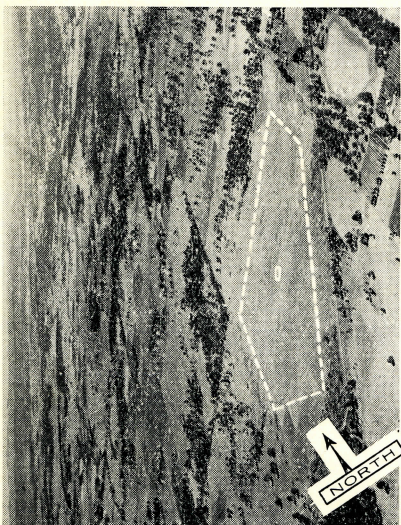
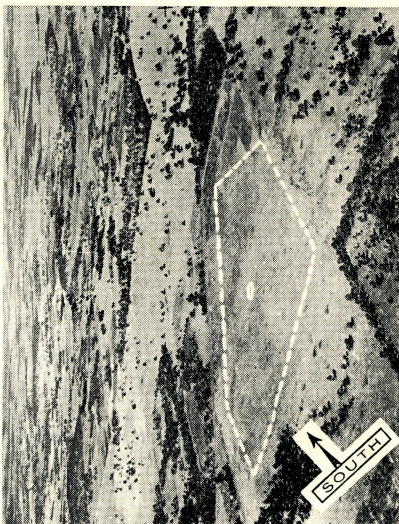
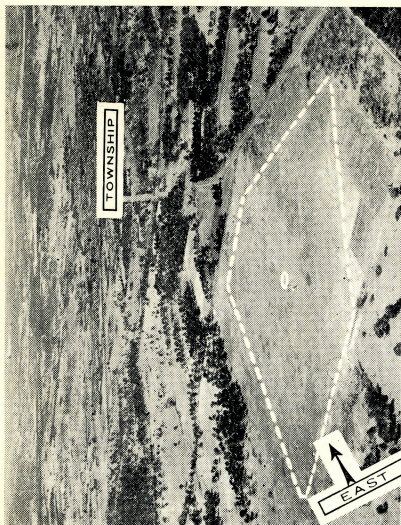


- ARMIDALE -



AUGUST, 1941

(Confidential Document)

DEPARTMENT OF CIVIL AVIATION

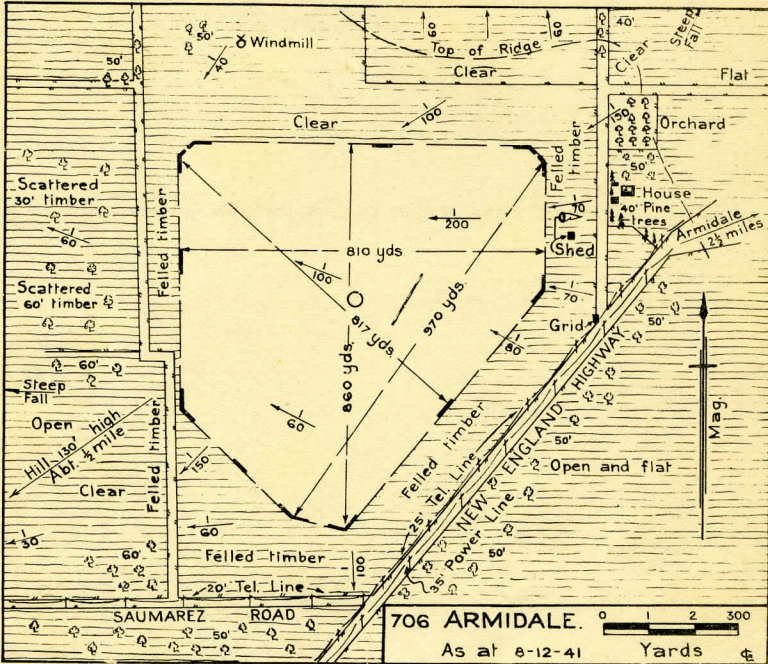
AUSTRALIA

DATA SHEET FOR LANDING GROUND NO. 706

ARMIDALE, N.S.W.

ISSUE 2 - JANUARY, 1942.

LICENSED AERODROME, "B" CLASS



LAT: 30°32' S. LONG: 151°38' E.
ALT: 3,300 ft. MAG. DEC: 9° E.
AVIATION MAPS: Sheet H.9.
Strip 2.

PROPRIETOR: Armidale Municipal
Council, N.S.W.

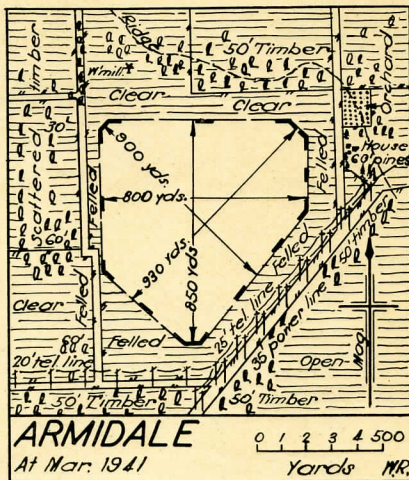
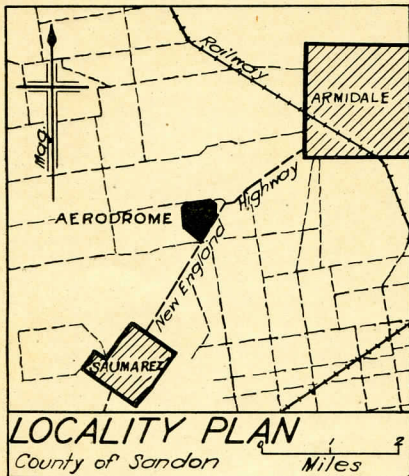
A. B. CORBETT

Director-General
of Civil Aviation

**DATA SHEET FOR LANDING GROUND NO.706
ARMIDALE, N.S.W.**

(APRIL, 1941 - FIRST ISSUE)

LICENSED AERODROME, "C" CLASS.



LATITUDE: 30° 32' S. LONGITUDE: 151° 38' E.
 ALTITUDE: 3,300 feet approx. MAG. VAR: 9° E. app.
 AVIATION MAPS: Sheet J.9, Strip 2.

PROPRIETORS: Armidale Municipal Council, N.S.W.
 CHARGES: Nil at present.

A.B. CORBETT

Director-General of Civil Aviation