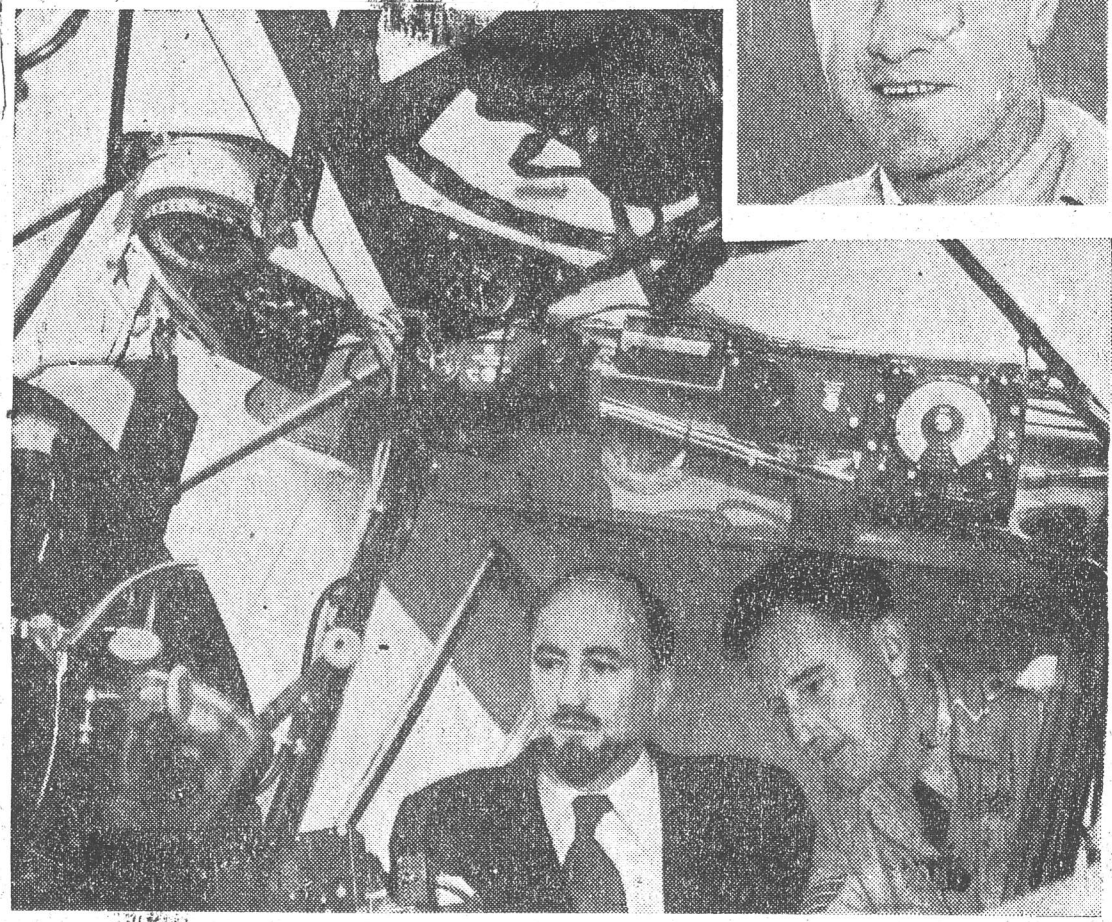


**EYES:** Tests of the two Auster light planes which will be the eyes of the expedition have begun. This one is fitted with floats, but can use wheels or skis at will. Leader of the RAAF party, and pilot of one of the planes, will be Flight Lieut. D. W. Leckie (picture at right). The expedition will be the first staffed and manned by Australians since the Mawson expedition more than 40 years ago. The mainland camp will reproduce normal Australian living conditions as much as possible, although external temperatures will be down to minus 40 deg. fahrenheit, and wn velocities can reach 150 miles an hour.



**LEADER:** The director of the Antarctic Division, Commonwealth Department of External Affairs (Dr. Philip Law), with beard, being shown the cockpit of the expedition's Auster aircraft by the second pilot, Sergeant S. R. Seaver. Dr. Law will lead the expedition and return in the exploration ship. A post office will be established on the mainland.