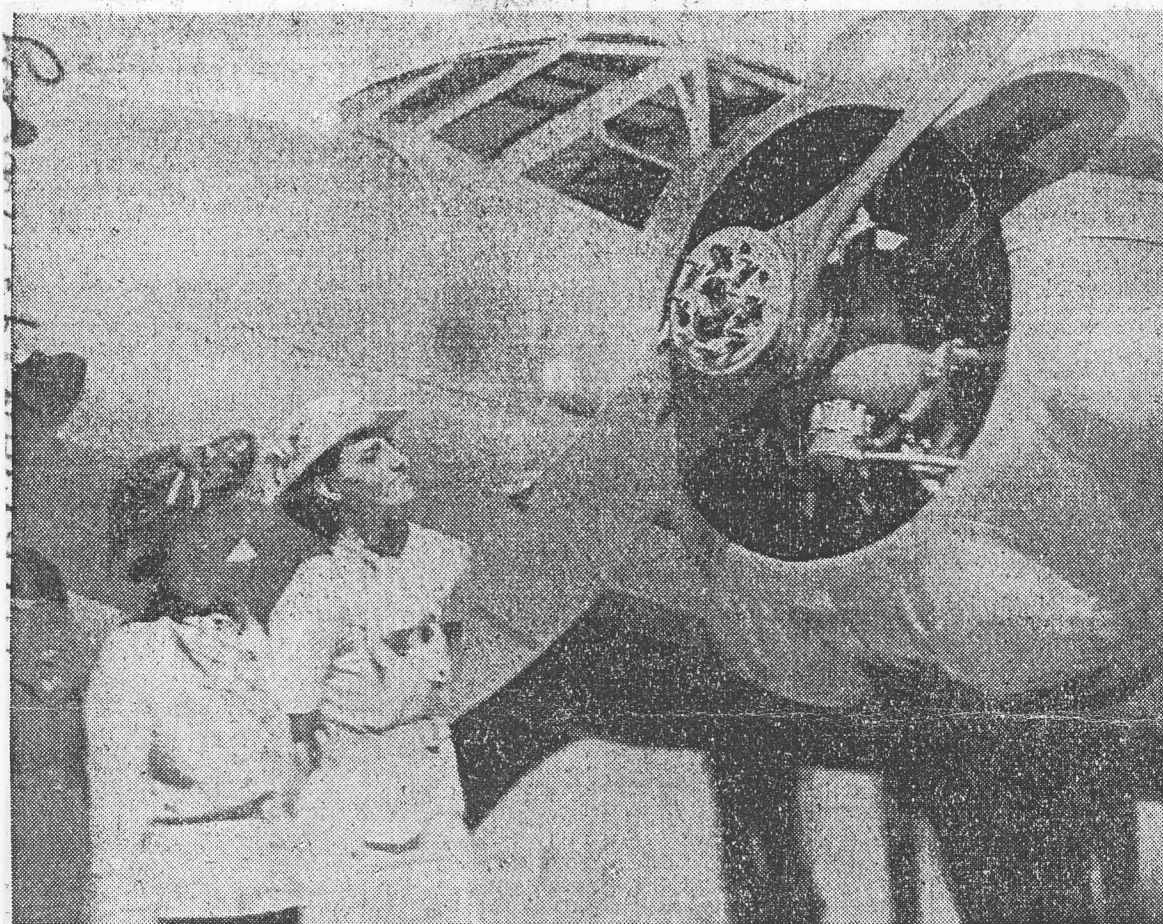


THE TWIN-ENGINE AVRO ANSON R.A.F. PLANE in charge of Group Officer A. T. Cole, also returned from Townsville, where an investigation of the crash was held. The plane carries a crew of four, including pilot, wireless operator, navigator, and gunner. The principal work of the plane is to cooperate with coast defence artillery, and to do long reconnaissance work at sea.



LOOKING INTO THINGS.—Two Rockhamptonites interested in the port unit of the twin-engine Avro Anson before she left for the South yesterday.