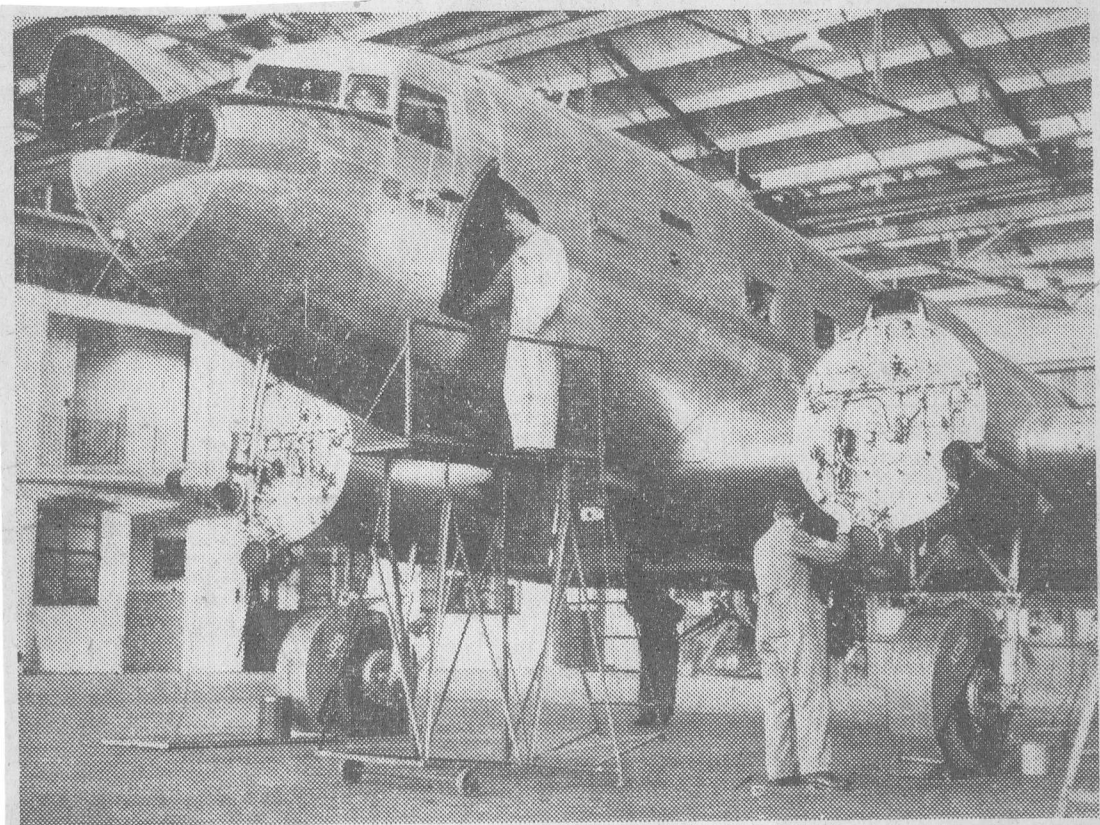


RW 1 A

1	DESIGNED BY	DOUGLAS	
2			C/N 16130/32878
3	BUILT BY		LINE NO.
4			
5	DESIGN NO.		
6	NAME	DAKOTA	MARK C.47
7			BUILT
8	PREVIOUS IDENT.	44-76546	CALL SIGN VM-NSW
9			
10			
11	POWER		
12			
13			
14			
15			

SOURCE	DATE	DETAIL
x	27.1.68	PARAFIELD: SILVER O/A / WHITE F/L TOP / BLUE F/L FLASH / KANGAROO ROUNDELS O/A BLACK SERIAL, A/G PANEL / GREY A/C RED / WHITE / BLUE TIPS 34 SQN BADGE BOTH SIDES NOSE
	68	REG'D N16130 : STANAIR CORP, FRESNO, CAL
	69	REG'D PK-JDB

**FITTING UP
MR McKELL'S
VIP PLANE**



AT LAVERTON TODAY RAAF mechanics are shown working on a Dakota plane which is being prepared for the Governor-General. The interior has been stripped and will be refitted and furnished as a VIP (very important person) aircraft.

22.6.47

**VIP Standard for
McKell Plane**

The loading limit for the Dakota used by the Governor-General (Mr McKell) was 26,200lb., compared with 29,000lb. all-up weight for similar planes on the courier service to Japan, because the Governor-General's plane was flown under internationally-accepted VIP (very important person) conditions. RAAF headquarters said today.

There was no question that 29,000lb. was too much all-up weight for the Japan courier service. The Dakotas had flown 5 million miles on this service without a fatal accident.

The route was from the northern temperate zone, across the equator with accompanying monsoons, to the southern temperate zone, and the 6000-mile course was one of the most varied in the world. The service was one of the most successful of its kind.

18.6.47

PLANE FOR MR McKELL



GOVERNOR-GENERAL'S PRIVATE PLANE: All the conveniences of a small flat are included in Mr McKell's Dakota, now ready for service. Picture taken at Laverton yesterday shows the comfortable lounge. Colour scheme is white and burgundy.

11.10.47