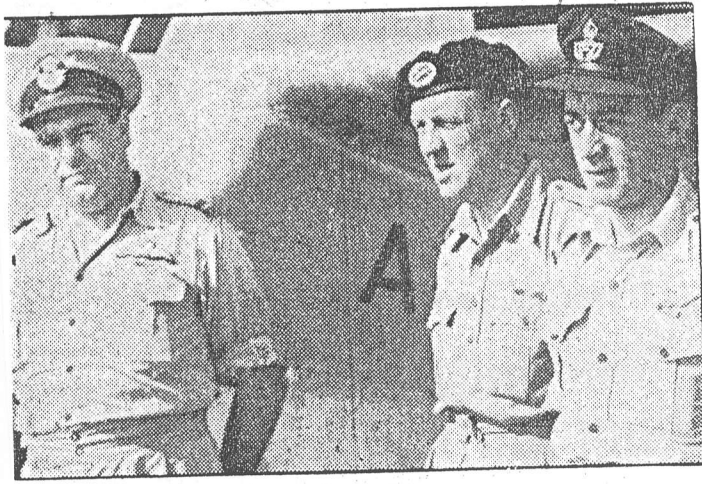


The Lockheed Lodestar plane, in which the Duke of Gloucester is making his visit to troops in the north, preparing to take off from Archerfield yesterday morning. At the right the Duke (right) bids a cheery farewell to the Governor (Sir Leslie Wilson), who accompanied him to the aerodrome. Below are members of the crew of the Duke's plane. The pilot, Flight Lieut. H. E. Teede, is on the left.



BRISBANE PAPER

# Brisbane First On Royal Visit List

BRISBANE may expect an official visit from the Duke and Duchess of Gloucester within the next three months.

This was indicated yesterday by the Duke's Chief of Staff (Brigadier Schreiber).

He said that the Duke, as Governor-General, was planning official visits to all State capitals, and that Brisbane, because of its wartime prominence, would probably be listed first in any itinerary proposed.

Only spectators at yesterday's early morning departure by the Duke, on the second stage of his flight North to inspect Australian troops, were a group of R.A.A.F. personnel.

The Commander-in-Chief (General Sir Thomas Blamey) was unable to accompany the Duke on his visit because he is suffering from a heavy cold.

The Royal plane took off from Archerfield at 8.30 a.m. The Duke drove from Government House with the Governor (Sir Leslie Wilson), who farewelled him as he entered the plane. Only a few people recognised the Duke as the royal car sped through suburban streets to Archerfield.

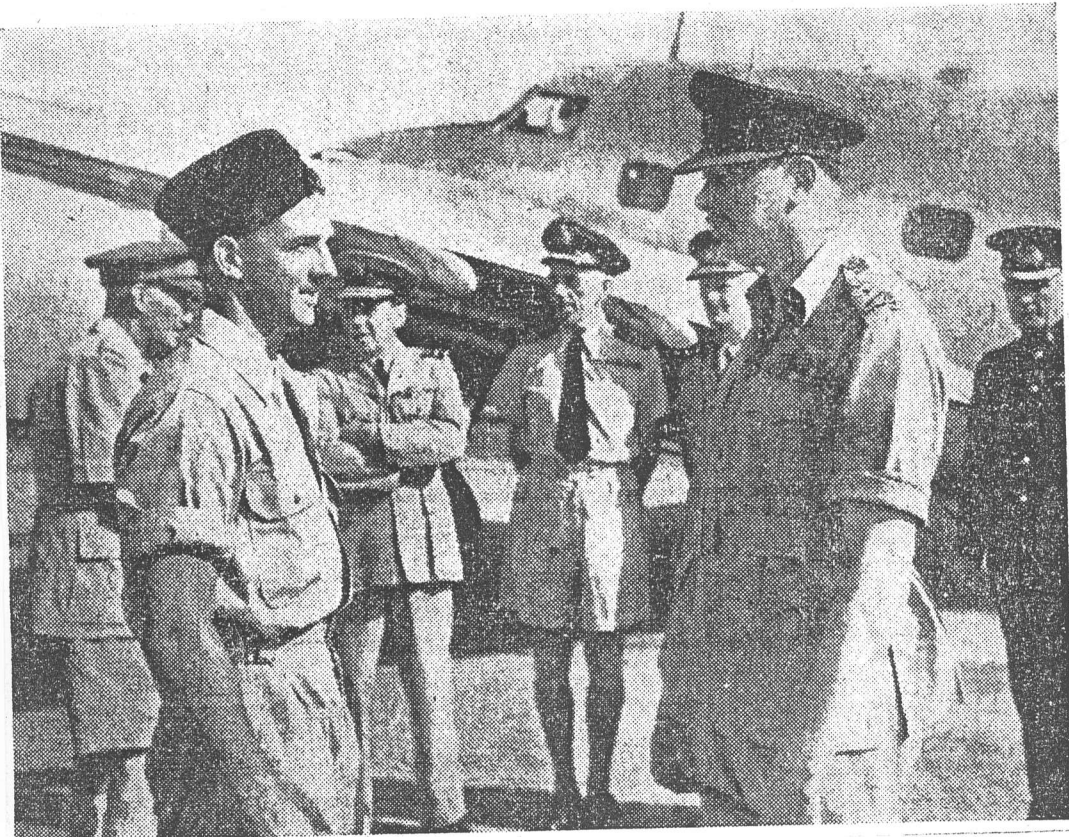
At the airport the Duke talked for a few moments with Sir Leslie's chauffeur (Mr. A. Taylor).

Only officials at the airport were the Police Commissioner (Mr. ...), the police

## DUKE WITH CORPORAL

The Governor-General, the Duke of Gloucester, talking to Corporal S. C. Brill, RAAF fitter, whose father is caretaker at Yarralumla.

In the background are the Governor (Sir Leslie Wilson), Air Vice-Marshal Bostock, Captain Thomas, RAN, Brigadier Legge, and Mr Carroll (Police Commissioner)



BRISBANE PAPER