

FIRST BEAUFORT torpedo-bomber assembled in New South Wales on the runway at Mascot aerodrome yesterday. It was assembled in the hangars of the Commonwealth Aircraft Production Commission at Mascot. Beauforts will now be assembled there regularly.

DAILY TELEGRAPH 21.10.41

N.S.W.-BUILT BOMBER TESTED

The first Bristol Beaufort torpedo-bomber assembled in New South Wales made a satisfactory test-flight at Mascot aerodrome yesterday.

The bomber was assembled at the hangars of the Aircraft Production Commission, Mascot, from 90 per cent. Australian-manufactured parts.

The engine and air-screw are imported.

The Beaufort was tested by the Commission's chief test-pilot (Captain Tom Young).

Today Captain Young will give the Beaufort an official test which will be watched by the Governor (Lord Wakehurst), the British Commander-in-Chief in the Far East (Air Chief-Marshal Sir Robert Brooke-Popham), and R.A.A.F. officials.

The Production Superintendent of the Commission (Mr. F. Wheeler) said yesterday that the bomber had been finished on schedule.

"It is a credit to Australian workmen, especially as no adjustments were needed after the flight," he said.

Hundreds of employees cheered when the Beaufort left the ground on the test flight.

DAILY TELEGRAPH 21.10.41

①

TRIAL FLIGHT SUCCESS

Sydney's First Beaufort

Completed promptly to schedule, the first Bristol Beaufort torpedo-bomber assembled in Sydney was given its preliminary trial flight yesterday.

It is the fastest aeroplane ever built in New South Wales.

Two hundred members of the Aircraft Production Commission's production staff, who had been working day and night putting the final touches to the machine, cheered as the plane roared across the flight field and soared into the air.

They watched with breathless interest as the machine circled slowly round the aerodrome until Captain T. R. Young, the Commission's test pilot, got the feel of the controls. Then the speed became swifter and the climb steeper. At a height of 5,000ft the pilot banked the machine slowly, then steeply, until the wings were vertical to the ground.

In this position she cut figure eights in mid-air, returned to normal flying position, and then sped at tremendous speed earthwards in a power-dive. She was pulled out of the dive at about a thousand feet above the heads of the spectators, and after circling low over the field at great speed came to a perfect landing.

A burst of applause greeted Captain Young as he unstrapped his parachute and stepped on to the tarmac.

"NO ADJUSTMENTS NEEDED"

"She's a fine aeroplane," he said, "and you won't need to make any adjustments."

"Well, that's a load off our minds," said a production engineer. "Now we shall sleep soundly at nights."

Others crowded round the production superintendent, Mr. Frank Wheeler, and shook him warmly by the hand.

The significance of the preliminary trial flight is that it marks the coming into production of the second Bristol Beaufort assembly plant in Australia. The other assembly plant, located in Melbourne, produced its first Bristol Beaufort last April. Several machines assembled at the Melbourne factory are now in the air and others are in advanced stages of assembly.

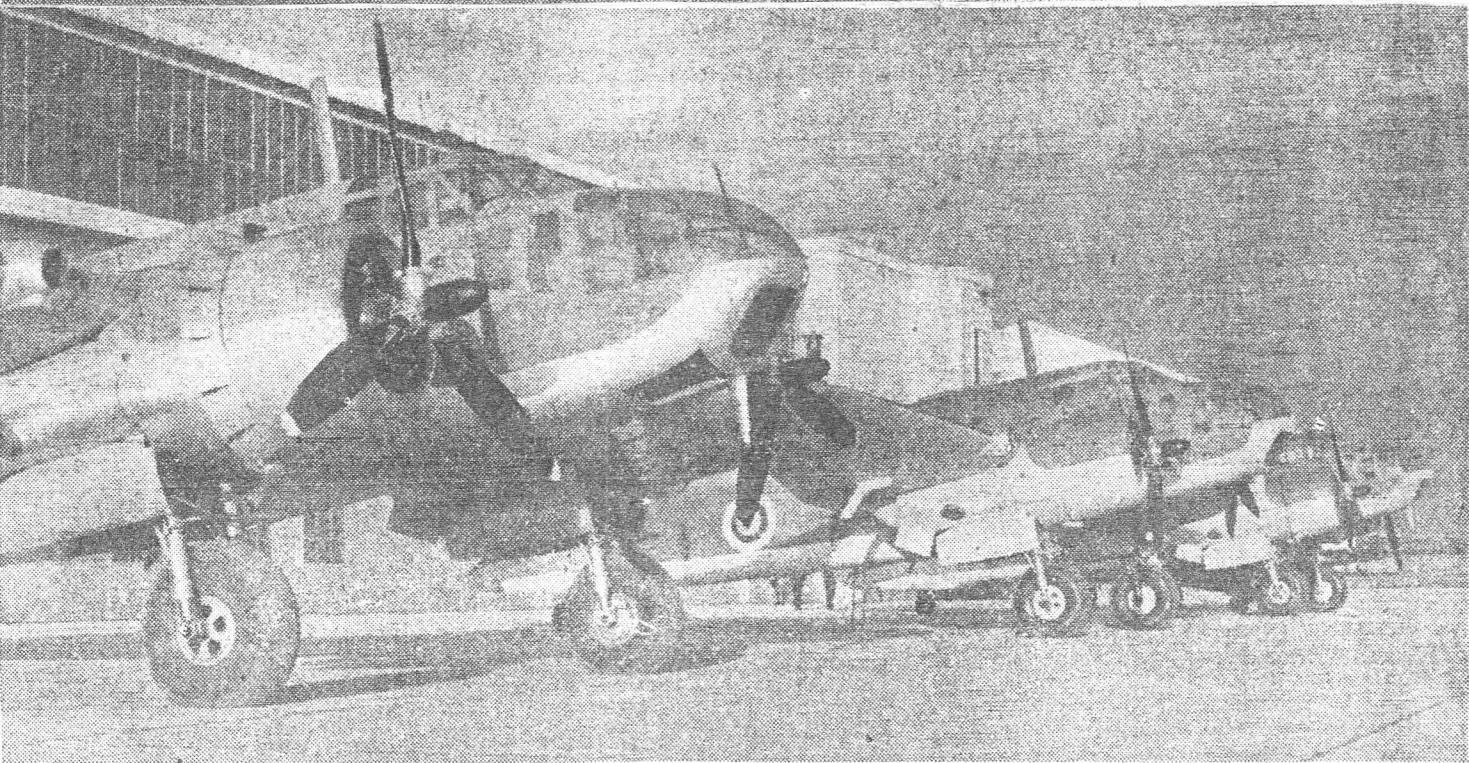
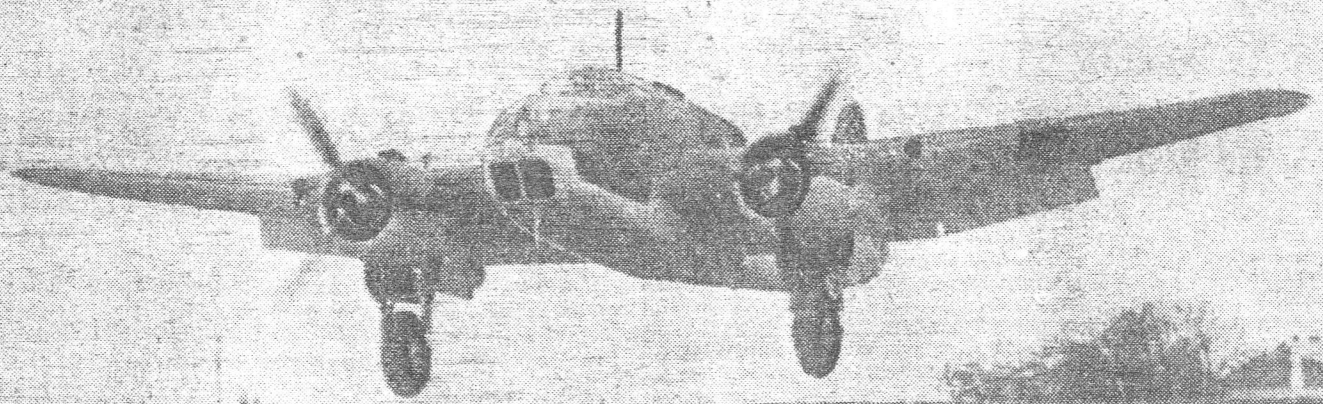
To complete the first Sydney-assembled Beaufort on the allotted schedule day is a compliment to the forethought, efficiency, and enthusiasm of the Sydney production staff. On July 1 the great assembly shop was an empty shell. In the intervening three and a half months the assembly jigs were fitted up, sub-assemblies were delivered and pieced together, and 50 workmen were sent to Melbourne to gain first-hand experience in assembling a complete machine.

(Picture on Page 8)

SYDNEY MORNING HERALD

21.10.41

FIRST BRISTOL BEAUFORT BOMBER ASSEMBLED IN SYDNEY



Top: The first Bristol Beaufort torpedo-bomber assembled in New South Wales making its initial trial flight at Mascot yesterday. Below: Three of the Australian-built Bristol Beaufort bombers on the tarmac at the Aircraft Production Commission's assembly factory at Mascot.

79541/49-2