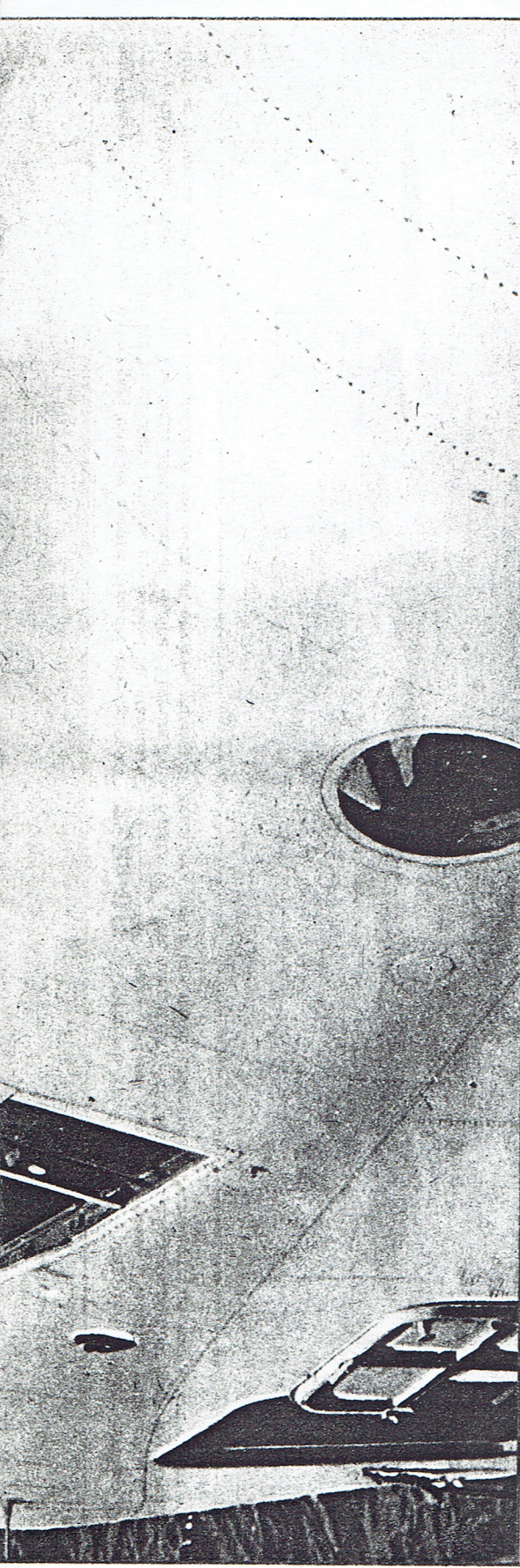




PIX

Vol. 15, No. 24

Saturday, June 16, 1945



RAAF LIFELINE TO BATTLEFRONT

PLAYING a magnificent background role to frontline fighting in the Pacific is RAAF fleet of twin-engined flying-boats, Martin Mariners, which transport high priority personnel and equipment to and from Australia. With top speed of 225 mph and load capacity of 35 personnel and two tons of freight, Mariners form invaluable,

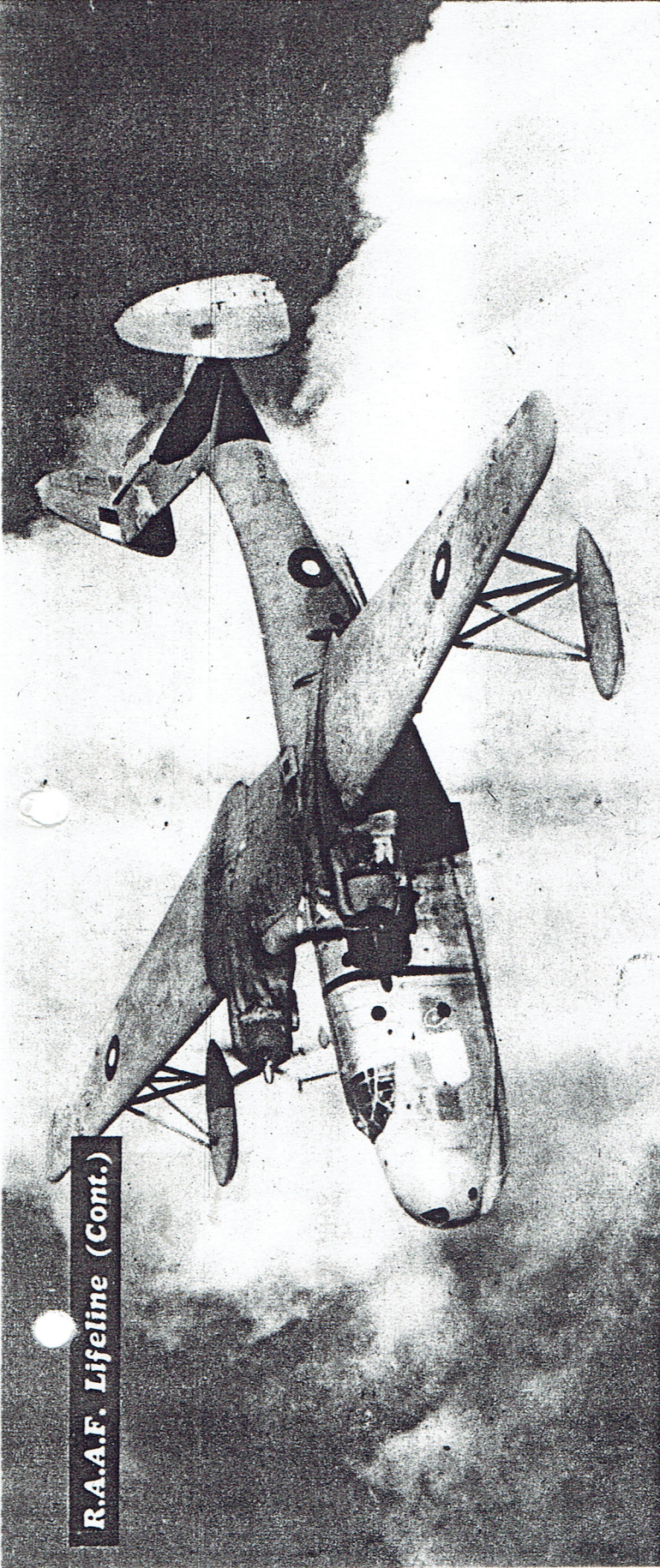
fast line of supply to forces in forward areas. In pictures on this and next two pages, a Mariner with its all-Australian crew is followed from a northern Australian base to Hollandia. Preparing for departure above are 1. to r. F/O P. E. Wright, Flt/Sgt. B. Noakes and Cpl. G. W. Duffy, all of Queensland. Pictures are from Dept. of Air.

JUNE 14, 1945.

PIX—Page Three

See Next Pages

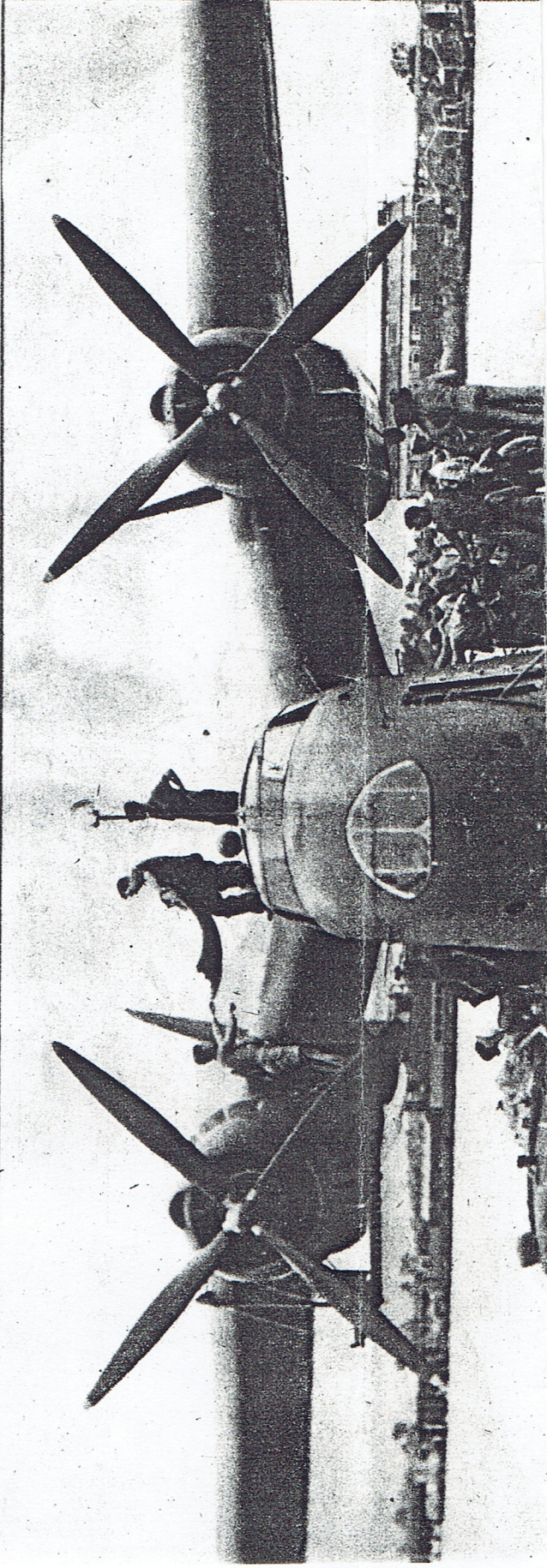
R.A.A.F. Lifeline (Cont.)



New Guinea-Bound

On way to Hollandia, Martin Mariner gracefully wings its way at 9000ft., above the Coral Sea. Fleet of Mariners was handed over to RAAF by US Navy. Previously they had

been in service as patrol bombers. On run between mainland and Australian and Dutch New Guinea bases Mariners often carry troops on leave and mail. Trip to Port Moresby is completed in two hops, stopping place on way being Cairns.



Loading

High priority passengers clamber aboard Mariner through port side door while mails, essential freight are loaded on starboard side. Maintenance crew complete pre-flight inspection of engine. Distinctive feature of plane is gull-wing—note pronounced dip between engines, fuselage.

Take-Off

Trailing a thick cloud of spray, the Mariner revs up in the take-off from Australian base. Plane has wing span of 118ft., length of 77ft., height of 17ft. 6in. RAAF transport of men and freight to northern areas has saved thousands of man-hours in war effort of the nation.



JUNE 16, 1945.

PIX—Page Four